



500 Sunset Drive  
Jordan, Minnesota 55352  
952-492-6200 main | 952-492-4445 fax

**DISTRICT NURSE**  
jordannurse@isd717.org

## SHUNT EMERGENCY CARE PLAN

Dear Parent(s) Guardians of: \_\_\_\_\_

According to our recent records you have indicated that your child has a history of long QT syndrome. To best care for your child while he/she is in school, please fill out the **Shunt Care Plan** before the start of the school year.

**The forms on the following pages must be completed and signed before the start of school.**

Please return the enclosed forms as soon as possible either by mailing, faxing or in person at the following school so that we may best care for your child should the need arise:

\_\_\_\_\_ **Jordan Elementary School**      Address: 815 Sunset Drive, Jordan, MN 55352  
Fax: 952-492-4446

\_\_\_\_\_ **Jordan Middle School**      Address: 500 Sunset Drive, Jordan, MN 55352  
Fax: 952-492-4450

\_\_\_\_\_ **Jordan High School**      Address: 600 Sunset Drive, Jordan, MN 55352  
Fax: 952-492-4425

Please call or email us if you have any questions or concerns.

Thank you,

Darci Griffiths MSN, RN, LSN  
District Nurse - JHS  
952-492-4410  
[jordannurse@isd717.org](mailto:jordannurse@isd717.org)  
Fax: 952-492-4425

Jenn Passe, RMA  
Jordan Middle School  
952-492-4232  
Fax: 952-492-4450

Jenna Hentges, RN  
Jordan Elementary School  
952-492-4278  
Fax: 952-492-4446

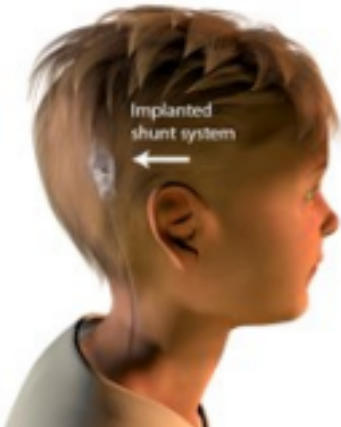
## OUR MISSION

Inspire a caring community to ignite  
learning, innovation, and success for all!

### EMERGENCY CARE PLAN : Shunt

Student Name: \_\_\_\_\_ DOB: \_\_\_\_\_ Grade: \_\_\_\_\_

Parent Contact Information: \_\_\_\_\_



A shunt is an implanted device used to drain extra cerebral spinal fluid (CSF) that circulates around the brain and spine. It is most often used to treat a condition known as hydrocephalus. Without a release of such excess fluid, pressure in the brain will increase and cause damage. A proximal, pressure responding catheter is implanted in the lateral brain ventricle. From here, a distal tubing can be palpated usually behind the child's ear, down along the neck, before it reaches its distal location. Shunts are named for the specific organs involved. Most often, shunts are placed in the lateral brain ventricle and drain to the abdomen; known as the ventriculoperitoneal (VP) shunt. At this distal location, the CSF will be absorbed by the body. Shunts can be programmable, meaning the healthcare provider can adjust how much fluid is drained by the shunt.

Student complaints/ observations	Educator Actions	Nursing Action/Intervention
Personality changes, headache, vomiting, lethargy, vision changes, increased irritability	1. Notify the school nurse/health room.	1. Contact parent. 2. Rule out other possible source of illness. 3. If unable to contact parent, call 911. Student needs to be assessed for shunt function and/or failure.
Head injury or trauma (hit with basketball, etc.)	1. Notify the school nurse/health room.	1. Contact parent. 2. If unable to contact parent, call 911. Student needs to be assessed for shunt function and/or failure.

Parent Signature: \_\_\_\_\_ Date: \_\_\_\_\_